

HIGH PRESSURE PLUNGER TYPE DOSING PUMPS LMI SERIES H9 - H7 - H1 / HH9 - HH7



- Flow rate up to 2 l/h – Pressure up to 135 bar



Main technical characteristics

- Maximum flow rate: 2 l/h
- Maximum pressure: 135 bar
- Minimum discharge pressure of 1.5 bar recommended
- Maximum temperature of pumped liquid: 50 °C
- Self priming height: 2 m
- Accuracy: $\pm 2\%$ of rated flow
- Adjustable stroke length: from 0 to 100 %
Recommended minimum: 25 %
- **Adjustable pressure capacity**
An LMI HH9, H9, H75 and H73 exclusive reducing pump noise, shock, vibration, and wear, prolonging pump life.
- **Manual mode select**
 - Stroke length adjustment from 25 to 100 %.
 - H1, H7 and HH7: the manual stroke rate is adjustable from 1 stroke per minute to 100 strokes per minute.
 - H9 and HH9: the manual stroke rate is adjustable from 1 stroke per hour to 100 strokes per minute.
- **Externally triggerable (not available on LMI H1)**
By voltage free switch, transistor, opto-coupler or hall effect sensor.

Construction of liquid end

Liquid end components	Materials
Liquid end body	316L
Valve body	316L
Seat	316L
Double balls	Hastelloy C
Stop ball	316L
Plunger	316L chrome oxide coated
Packing ring	Carbon filled PTFE

Totally enclosed corrosion resistant IP65

- O-Ring sealed corrosion resistant enclosure of glass fibre reinforced polypropylene protects the pump from harsh chemicals and tough environments.
- All LMI HH pumps will be delivered with a clear cover to protect control panel from chemical splashes.

Simple rugged construction

- Thick wall glass fibre or carbon fibre reinforced thermoplastic construction plus integrated metal-plastic structural and magnetic components result in vibration and shock resistance not ordinarily found in competitive products.
- Strong automotive type wire and electrical connectors add to its construction strength.

Series H9 and HH9 specificities

- H9 and HH9 Series Programmable Electronic dosing pumps combine the accuracy of microprocessor control with high injection pressure capability of plunger liquid end. These high-pressure programmable pumps are ideal for applications requiring precise injection of concentrated boiler feed chemicals.
- On-Off external trigger control.
- Divide incoming pulses from 1 to 999.
- Multiply incoming pulses from 1 to 999. Batch accumulate to 999 strokes.
- Slope adjustable/response Programmable 0 to 20 mA or 4 to 20 mA control signals. Direct or inverse response selectable.
- Optional 8 wires cable for mA control.

Performances

Series H93 - H73 - H13 and H95 - H75 - H15 Series HH94 - HH74

MODEL	FLOW RATE (l/h)		PRESSURE (bar) max.	PLUNGER Ø (mm)	STROKE CAPACITY (cm ³)
	10 bar	Pmax			
Hx3*-N6P	0.23	0.13	135	6	0.046
Hx3*-N8P	0.52	0.36	100	8	0.08
Hx3*-N10P	0.72	0.62	70	10	0.12
Hx3*-N12P	1	0.9	45	12	0.18
Hx3*-N14P	1.4	1.25	30	14	0.25
Hx5*-N6P	0.33	0.22	135	6	0.063
Hx5*-N8P	0.72	0.52	105	8	0.1
Hx5*-N10P	0.98	0.85	75	10	0.16
Hx5*-N12P	1.45	1.35	50	12	0.24
Hx5*-N14P	2	1.8	40	14	0.34
HHx4*-N6P	0.16	0.1	80	6	0.029
HHx4*-N8P	0.28	0.2	50	8	0.05
HHx4*-N10P	0.45	0.38	35	10	0.075
HHx4*-N12P	0.65	0.57	25	12	0.11

x = 1: Stroke frequency and stroke length manually adjustable

x = 7: Control by a dry contact

x = 9: Programmable micro processor based pump

* Please, specify desired both voltage and power cord/plug type by inserting one of the numbers below:

- 1 = 115 V, US Plug
 - 2 = 230 V, CEE Plug
 - 3 = 230 V, UK Plug
 - 4 = 230 V, CH Plug
 - 8 = 115V, Without Plug
- Not available on HH94 and HH74

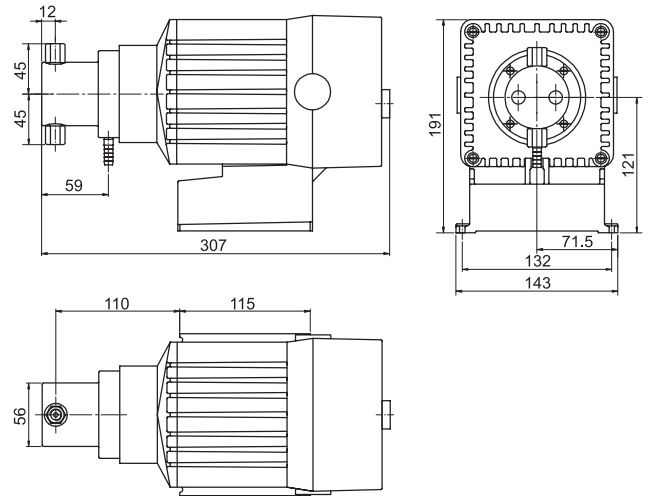
Weight and packing

Version	Gross Weight ⁽¹⁾ (kg)	Packing ⁽²⁾ (L x l x H) mm
LMI H93 / H73 / H13	6.9	325 x 235 x 290
LMI H95 / H75 / H15	8.7	380 x 235 x 290
LMI HH9 / HH7	4.5	325 x 235 x 290

⁽¹⁾Approximately - ⁽²⁾ Standard cardboard packing

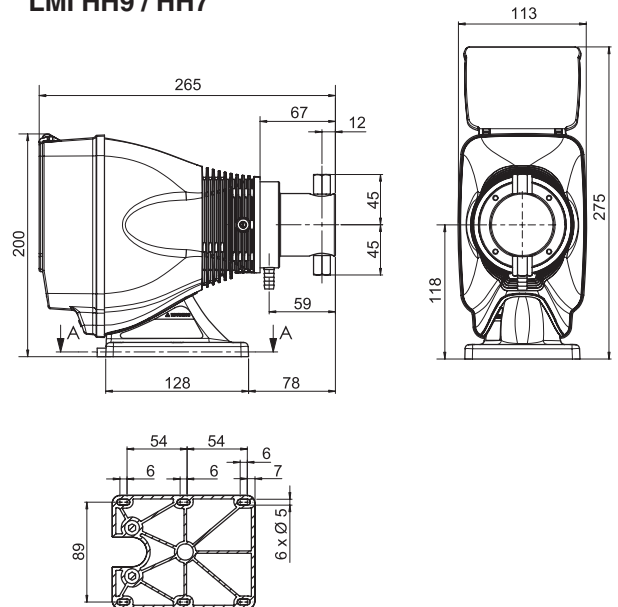
Dimensions and connections

LMI H9 / H7 / H1



Connections: 1/4" NPT Female

LMI HH9 / HH7



Connections: 1/4" NPT Female



FRANCE - DOSAPRO MILTON ROY S.A.
10, Grande Rue - 27360 Pont Saint Pierre
Tél. : +33 (0)2 32 68 30 00 - Fax : +33 (0)2 32 68 30 93
www.dosapro.com - e-mail : contact@dosapro.com

ESPAÑA - DOSAPRO MILTON ROY IBERICA
C/Embajadores, 100 - 28012 MADRID
Tél. : +34 91 517 80 00 - Fax : +34 91 517 52 38
www.dosapro.es - e-mail : dmri@dosapro.es

UNITED STATES - LIQUID METRONICS, INC
201, Ivyland Road - Ivyland, PA 18974 USA
Tél. : 1 (215) 293 0401 - Fax : 1 (800) 327 7563
www.lmipumps.com

INTERNATIONAL SALES and PROJECTS DEPARTMENT
10, Grande Rue - 27360 Pont Saint Pierre (France)
Tél. : +33 (0)2 32 68 30 12 - Fax : +33 (0)2 32 68 30 91

SPARE PARTS DEPARTMENT/PIÈCES DE RECHANGE
10, Grande Rue - 27360 Pont Saint Pierre (France)
Tél. +33 (0)2 32 68 30 01 - Fax: +33 (0)2 32 68 30 92
e-mail : spare.parts@dosapro.com

INTERNATIONAL TECHNICAL ASSISTANCE/ASSISTANCE TECHNIQUE
10, Grande Rue - 27360 Pont-Saint-Pierre (France)
Tel : +33 (0)2 32 68 30 02 - Fax : +33 (0)2 32 68 30 96
e-mail : support@dosapro.com

DOSAPRO MILTON ROY EN FRANCE :
Angers, Bordeaux, Lille, Lyon, Nancy, Paris, Rouen

