



Internet Communications

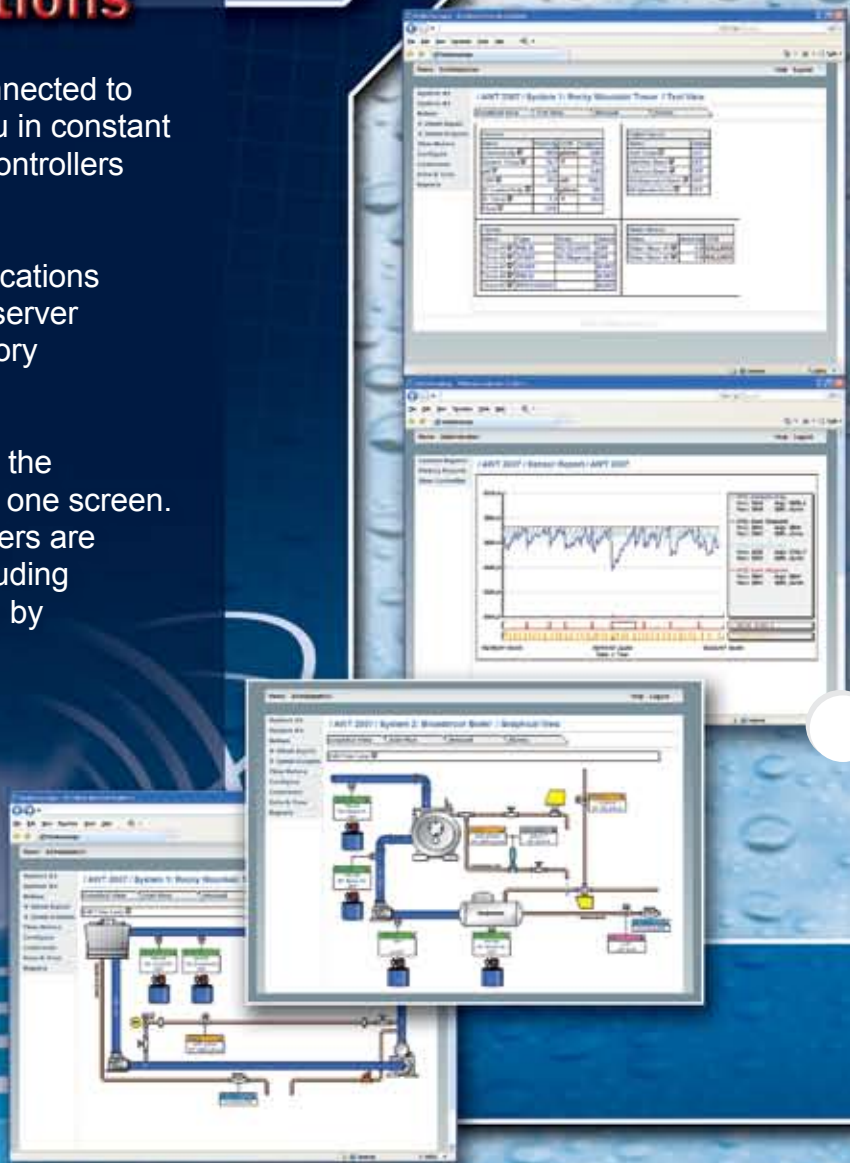
Get the **Web Advantage** and stay connected to your MegaTron! Web Advantage keeps you in constant contact with all of your on-line MegaTron controllers at one time over the World Wide Web.

Web Advantage uses web based communications with the newest, most reliable and secure server technology for connection, control and history management.

An exclusive summary view lets you check the status of all your connected MegaTrons on one screen. Email alerts from the server ensure that users are kept informed of any alarm conditions, including disconnection and power loss encountered by remote MegaTrons.

Key Features:

- 128 Bit Encryption Security
- Change Settings Remotely
- No Software to Load
- Back-Up Server Assurance
- One Page Summary
- Email Alarm Notification
- Constant Connection
- Server Stored History



Get the Advantage

Advantage Controls
 4700 Harold Abitz Dr.
 Muskogee, OK 74403
 800-743-7431
 888-686-6212 Fax
 www.advantagecontrols.com



Go online and see all of our water treatment control equipment...www.advantagecontrols.com



www.advantagecontrols.com

Functions

MegaTron units are designed for continuous monitoring of industrial water systems such as cooling towers, boilers and process water. Using a simple system approach, an individual MegaTron can control 1 to 4 independent systems and the MegaTron SS a single system. Each one of these systems can be configured with the functions your application requires.

Monitoring and Control Options Include:

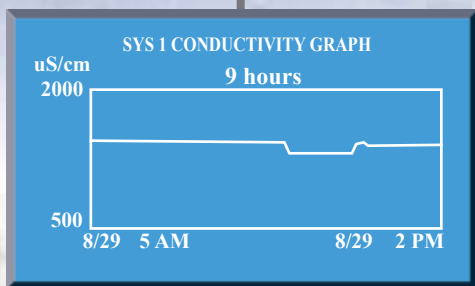
- Conductivity
- Make-Up Conductivity
- pH
- ORP Millivolts
- Temperatures
- Saturation Indexing
- Digital Inputs
- Water Meter Inputs
- Aux. Flowmeter Inputs
- PPM



Features

- On Board History
- Service Notepad
- Multi-Level Security
- Agency Approved
- 20 Character Keypad
- LCD Display
- One Point Calibration
- Assignable Relay Logic

SYSTEM 1 TIMER 1 PGM 1 CHANGE	
WEEKS	MIN. COND
DAYS	FEED LOCK
START TIME	BLEED LOCK
RUN	
PRE-BLEED	ORP LOCK



Get the Advantage of system control made simple! The MegaTron is the most user friendly water treatment controller available with a simple ATM style menu and a large 16-line full graphic display.

SYSTEM 1 CONDUCTIVITY SETPOINT CHANGE	
DI	SET POINT (RISES TO 02000 uS/cm)
HI	[RISES] _ uS/cm
	USE NUMBER KEY TO CHANGE, PRESS ENTER TO ACCEPT OR BACK TO ERASE
	LOW ALARM
	LIMIT TIME

ACI MEGATRON	
SYS1: TOWER CARD 1	
COND 1,400 uS/cm	STATUS SYS OK
pH 7.2	TEMPL: 77.1 F
ORP 375 mV	FLOW: ON
SYSTEM OK	RELAYS

CUSTOMIZE SYS 1 NOTEPAD	
NO1: Conductivity	NO6: Make-up Cond
NO2: pH Test	NO7: Chlorides
NO3: ORP Test	NO8: Make-up
NO4: Alkalinity	NO9: Total Hardness
NO5: Calcium Hardness	NO10: Molybdenum

HOME SETUP	
SETPOINTS	DATE/TIME
CALIBRATION	CONFIGURE
TIMERS	HISTORY
CUSTOMIZE	WATER METER
ALARMS	RELAYS

Web-Based Communications
Turn page to learn more.



SINGLE SYSTEM

- Maximum Optional Capacity:
- 5 Control Relays
 - 5 Digital Inputs
 - 2 Water Meter Inputs
 - 1 Flow Switch Input
 - 2 4-20mA Inputs
 - 3 4-20mA Outputs
 - 3 Feed Verification Inputs
 - 4 Sensors



1 TO 4 SYSTEMS

- Maximum Optional Capacity:
- 20 Control Relays
 - 8 4-20mA Inputs
 - 6 4-20mA Outputs
 - 10 Feed Verification Inputs
 - 4 System Cards
- MAXIMUM PER SYSTEM CARD:
- 2 Water Meter Inputs
 - 1 Flow Switch Inputs
 - 5 Digital Inputs
 - 6 Sensors

Get the Advantage

